

10.0%

YoY change



PROVINCIAL CAPITALS
& MAIN CITIES

2,045 points

1.1% 60.9% -5.9%
monthly variation from minimum from peak

7.5%

YoY change



METROPOLITAN
AREAS

2,076 points

0.7% 52.6% -14.8%
monthly variation from minimum from peak

9.1%

YoY change



MEDITERRANEAN
COAST

2,187 points

1.1% 45.7% -20.0%
monthly variation from minimum from peak

14.2%

YoY change



BALEARIC &
CANARY ISLANDS

2,301 points

1.3% 67.2% 13.5%
monthly variation from minimum from peak

7.0%

YoY change



OTHER
MUNICIPALITIES

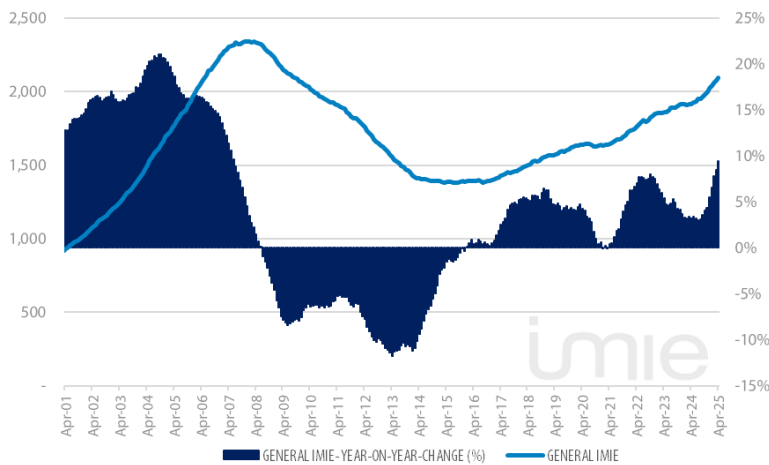
1,746 points

0.6% 31.4% -22.6%
monthly variation from minimum from peak

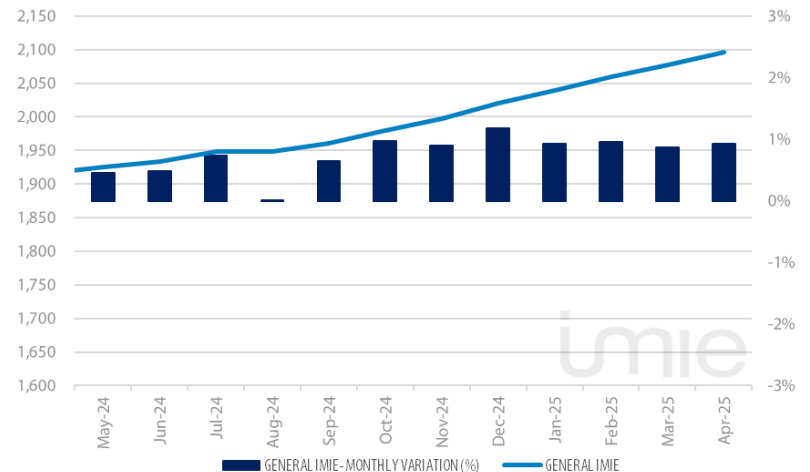
Tinsa IMIE General & Large Markets housing price index, based on valuations of finished homes (new and resale) by Tinsa, takes a monthly reading of year-on-year property values and their level compared to 2001 (base point of 1,000).

Historical evolution of the General Index

GENERAL INDEX AND YEAR-TO-YEAR CHANGE



MONTHLY VARIATION (LAST 12 MONTHS)



Market Snapshot

YoY change (except net online available properties, Euribor interest rate & doubtful loan rate)



PROPERTY
SALES

13.0

FEB



BUILDING
LICENSES

49.2%

FEB



NET ONLINE AVAILABLE PROP.
(QUARTERLY CHANGE)

-9.98%

1Q 2025



MORTGAGES

5.0%

FEB



GENERAL INDEX
IMIE

9.4%

APR



IPC

2.2%

APR



EURIBOR (rate)

2.1%

APR



DOUBTFUL LOAN
RATE

2.40%

4Q 2024



CONTRIBUTORS TO
SOCIAL SECURITY

2.3%

APR

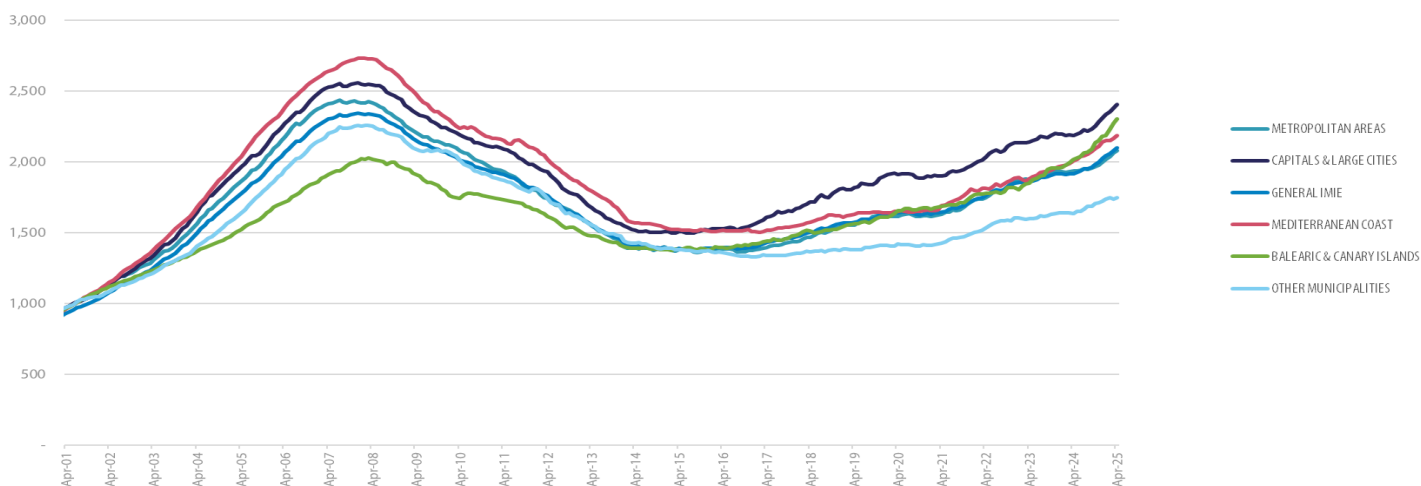


UNEMPLOYMENT
RATE

-5.8%

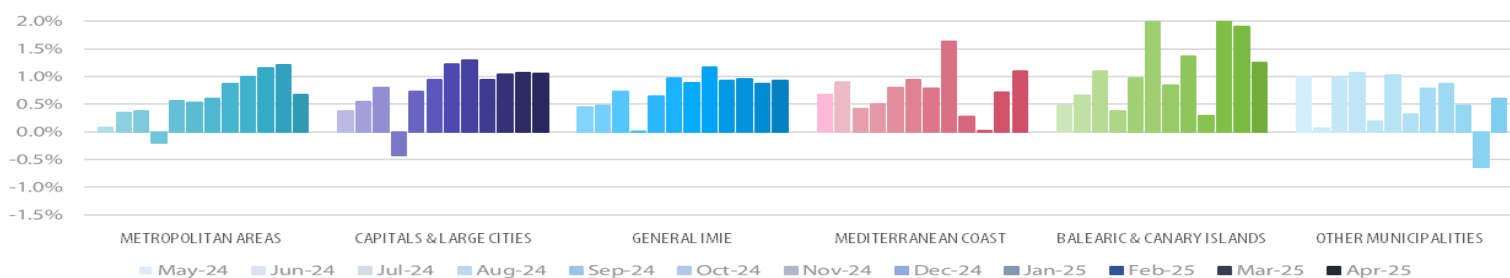
APR

Comparative changes in indexes



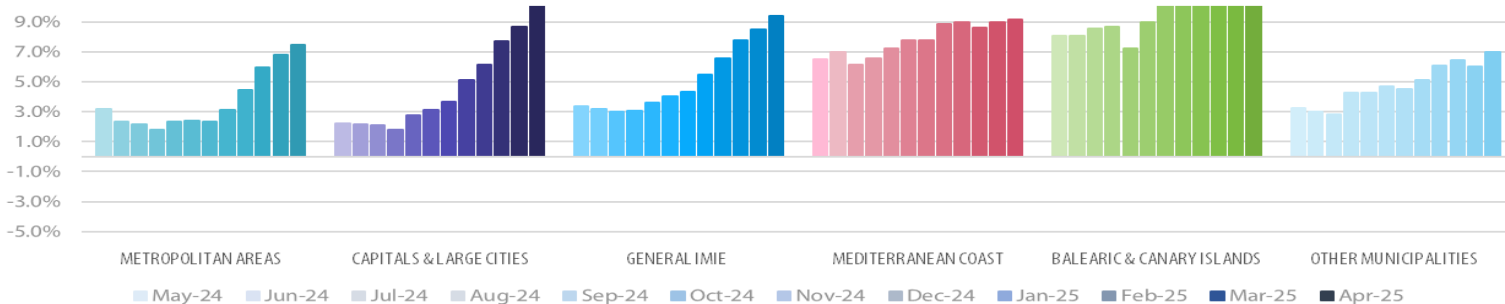
Monthly variation

LAST 12 MONTHS

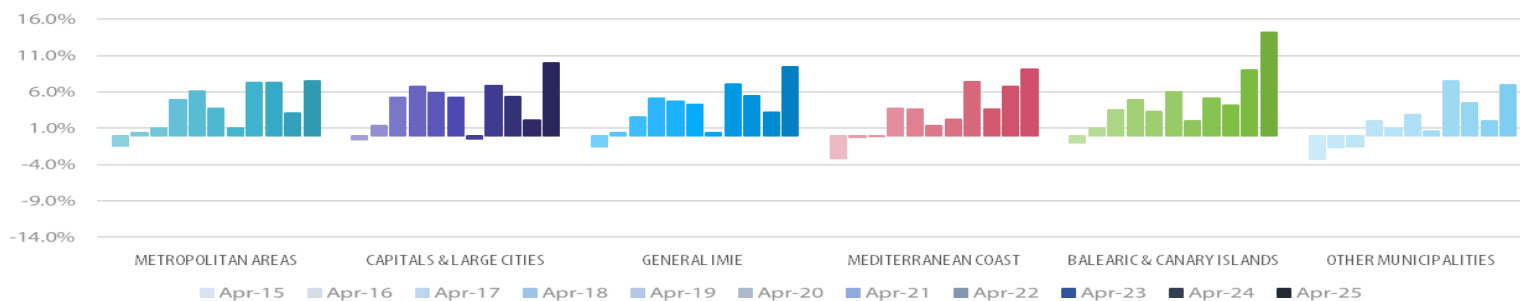


Year-on-Year change

LAST 12 MONTHS



LAST 10 YEARS



Main Property & Economic indicators

Property indicators



SALES

Property transactions (new and second hand included).

	FEB 2025	PREVIOUS MONTH
Year-on year change	13.0%	11.6%
Total	59,682	60,650
Year-to date change*	12.3%	11.6%

Source: In-house and main online portals
(*): From January compared to the same period last year.



BUILDING LICENCES

Building licences issued by the Technical Architects' Association

	FEB 2025	PREVIOUS MONTH
Year-on-year change	49.2%	20.4%
Total	11,517	11,355
Year-to-date change*	33.4%	20.4%

Source: Spanish Ministry of Transport, Mobility & Urban Agenda.
(*): From January compared to the same period last year.



AVAILABLE PROPERTIES ON ONLINE PORTALS

Net available property advertised on main portals

	1Q 2025	PREVIOUS TRI.
Total	515,247	572,379
Year-on-year change	-21.11%	-18.68%

Source: In-house and main online portals.



MORTGAGES

Number of mortgage loans approved

	FEB 2025	PREVIOUS MONTH
Year-on-year change	5.0%	14.9%
Total	39,084	38,058
Year-to-date change*	9.6%	14.9%

Source: Spanish Institute of Statistics (INE).
(*): From January compared to the same period last year.



GENERAL IMIE

Changes in average Price per m² for Tinsa-valued properties

	APR 2025	PREVIOUS MONTH
Year-to-year change	9.4%	8.5%
From peak	-10.5%	-11.3%

Source: Tinsa.

Economic indicators



IPC

Consumer Price Index

	APR 2025	PREVIOUS MONTH
Annual rate	2.2%	2.3%

Source: Spanish Institute of Statistics (INE).



EURIBOR

Average interest rate offered by banks and used as reference for mortgage loans

	APR 2025	PREVIOUS MONTH
Monthly rate	2.14%	2.39%

Source: Bank of Spain



DOUBTFUL LOAN RATE*

Mortgage loans considered to be at risk of default

	DEC 2024	PREVIOUS QTR
Quarterly rate	2.40%	2.46%

Source: Spanish Mortgage Association (AHE)
*Household debt for property purchase.



CONTRIBUTORS TO SOCIAL SECURITY

Number registered as employed on the last day of the month

	APR 2025	PREVIOUS MONTH
Year-to-year change	2.3%	2.2%
Total	21,588,639	21,357,646

Source: Ministry of Employment.



UNEMPLOYMENT RATE

Number of registered unemployed

	APR 2025	PREVIOUS MONTH
Year-to-year change	-5.8%	-5.4%
Número absoluto	2,512,718	2,580,138

Source: Ministry of Employment.